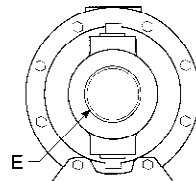
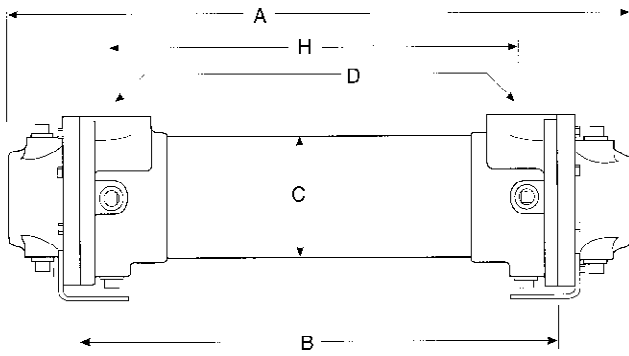
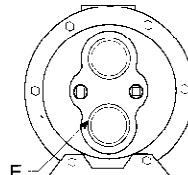


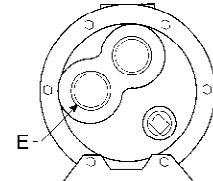
# REPLACEMENT IDENTIFICATION *shell & tube*



G (one pass)

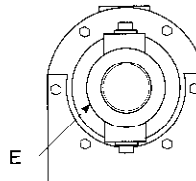
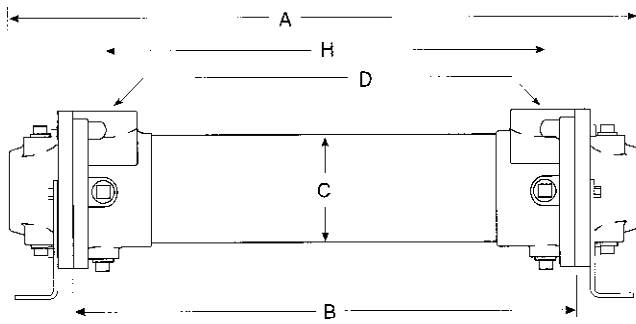


G (two pass)

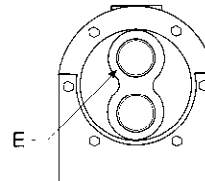


G (four pass)

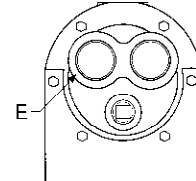
## AA Series



G (one pass)



G (two pass)



G (four pass)

## AB Series

- A Overall Length \_\_\_\_\_
- B Flange to Flange Length \_\_\_\_\_
- C Shell Diameter \_\_\_\_\_
- D Shell Side Pipe Size \_\_\_\_\_
- E Tube Side Pipe Size \_\_\_\_\_
- G Number of Passes \_\_\_\_\_
- H Center to Center Shell \_\_\_\_\_
- I Tube Size (O.D.) / No. of Tubes \_\_\_\_\_
- J Tube Material \_\_\_\_\_
- L End Bonnet Material \_\_\_\_\_

If Available:

- Manufacturer \_\_\_\_\_
- Model Number \_\_\_\_\_
- Shell Material \_\_\_\_\_
- Baffle Spacing \_\_\_\_\_
- Tube Side Flow Rate \_\_\_\_\_
- Shell Side Flow Rate \_\_\_\_\_
- Tube Side Liquid \_\_\_\_\_
- Shell Side Liquid \_\_\_\_\_

Comments

\_\_\_\_\_

\_\_\_\_\_

\_\_\_\_\_

\_\_\_\_\_

note: AIHTI reserves the right to make reasonable design changes without notice.